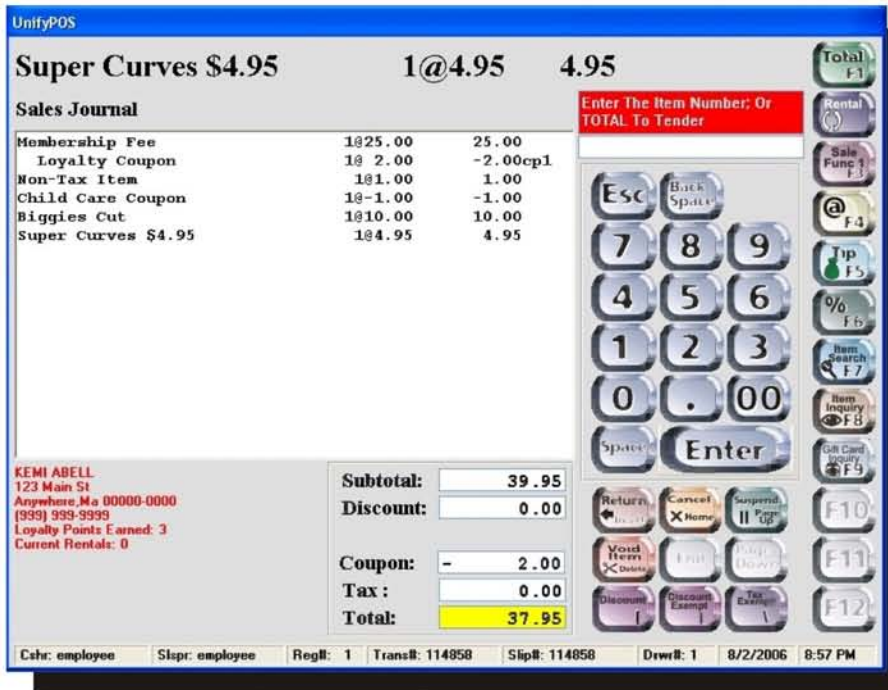
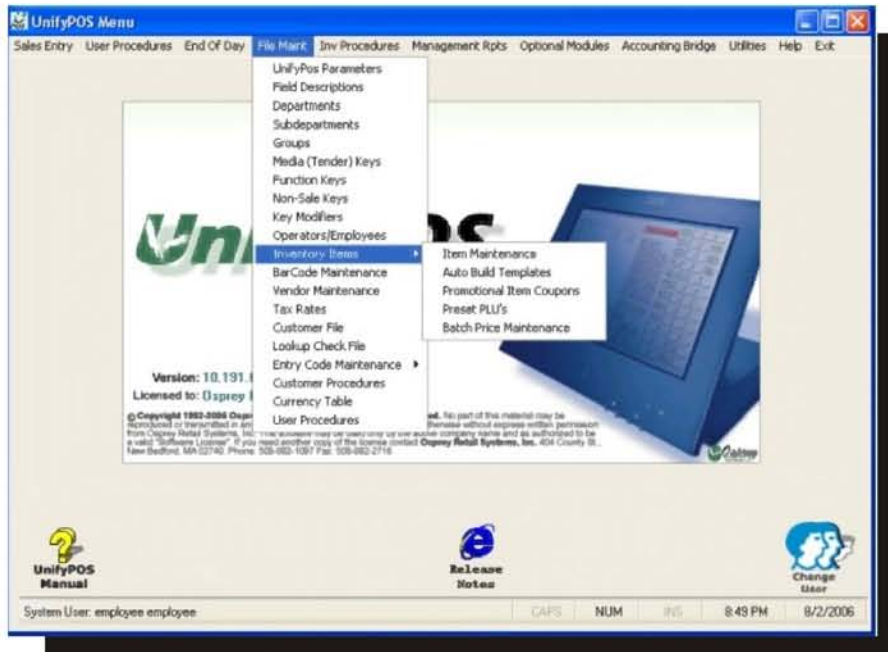


# UnityPOS

## Retail Store Solution

### BASE POS version includes

- Easy to use Windows interface
- Touchscreen, Keyboard, Preset or Scanning sales entry
- Department, Sub-Dept., Group and Item Levels
- Customizable system reports in Crystal
- Financial reports in Excel (*Excel purchased separately*)
- Customer Profiles and Tracking
- Margin Control
- Global Suspend/Resume
- Sales Reporting & Commissions
- Time & Attendance
- On/Off Sale Periods
- Price Level for Customers
- Serial Number Tracking
- Package/Kit Sales
- Special Orders
- Electronic Notes for Customer Info or Cross Sell
- Item Searches
- Transaction Modify/Cancel
- Layaways
- Sales Restrictions (Age, Time, Date)
- Savings Message
- Voids, Refunds, Returns
- Markdowns, Discounts (Line, Sale, Auto, etc)
- Gift Receipts & Certificates (Gift Card Pro optional)
- Interface with Quickbooks
- LCD Customer display support



404 County Street, New Bedford, MA 02740 508-992-1097  
[www.ospreyretailsystems.com](http://www.ospreyretailsystems.com)

© Copyright 2006 Osprey Retail Systems, Inc. All Rights Reserved.

**MID-LEVEL POS version adds**

- Item Movement &
- Historical Analysis
- Physical Inventory Module

**LOADED POS version adds**

- Stock Inventory Replenishment (Purchase Orders) Module
- Gift Card Pro (single store)

**OTHER POS OPTIONS**

- Credit Authorization
- Eye-NET Audit Security
- Wireless Transaction POS
- Rental Pro Module
- Tag Production Module (designed for Non-Profit)
- HOST Enterprise Store
- Management System in Real Time
- Enterprise Gift Cards
- Barcode Label & Sign Printing



Inventory Item List

Item Number	Pack#	Item Description	Dept#	Sbdpt#	Group#	Like Code	Cost	Retail
1		1 Membership Fee	01	05			1.0000	25.00
1		2 New Item		11			1.0000	5.00
2		1 Allow Neg Accumulation		11			0.0000	2.00
3		1 Tell A Friend Coupon		11			0.0000	1.00
4		1 Child Care Coupon		11			0.0000	1.00
5		1 Canvassing Coupon 1.00		11			0.0000	1.00
6		1 Super Cut		01			0.0000	6.00
7		1 Super Cut Classic		01			0.0000	10.00
8		1 Super Cut Supreme		01			0.1000	8.00
9		1 Super Trim		01			1.0000	9.00
10		1 Biggies Cut		01			0.0000	10.00

Item List      Records=348

Barcodes | Vendor Product Codes | Serial Numbers | Inventory | Sales History | Purchase History

Period	Start Date	End Date	Qty Sales	Net Sales	Cost Of Sales	Disc Amt	Mkdn Amt	Promo Qty 1	Promo Net 1
D	08/02/05	08/02/06	4	22.20	0.00	1.80	0.00	4	22.20
D	11/09/00	11/09/00	1	6.00	0.00	0.00	0.00	0	0.00
D	10/20/00	10/20/00	5	30.00	0.00	0.00	0.00	0	0.00
D	09/02/00	09/02/00	1	6.00	0.00	0.00	0.00	0	0.00
D	09/01/00	09/01/00	2	12.00	0.00	0.00	0.00	0	0.00
D	03/13/00	03/13/00	2	12.00	0.00	0.00	0.00	0	0.00
D	02/18/00	02/18/00	2	9.00	0.00	3.00	0.00	0	0.00

Daily Periods     Weekly Periods     Monthly Periods     ALL Periods

8/2/2006 9:07:35PM      Osprey Retail Systems, Inc.      Report# 1341

**CUSTOMER ITEM HISTORY REPORT**

Customer: ABELL To: Zandersonstonslein

**143101**      **Allen, Amber**

Item Number	Pack Code	Item Description	Net Amount	Net Quantity	Discount Dollars	Markdown Dollars	Trans Number	Trans Date	Sale Total	Ad
64	1	Bl. Beal Pull	228.00	4	9.00	2.00	114029	08/02/2006	228.00	
64	1	Bl. Beal Pull	218.00	4	9.00	2.00	114028	08/02/2006	218.00	

Customer Totals:      346.00      10.00      0.00      4.00

**238001**      **ABELL, Lori**

Item Number	Pack Code	Item Description	Net Amount	Net Quantity	Discount Dollars	Markdown Dollars	Trans Number	Trans Date	Sale Total	Ad
35	1	Open RLJ	95.00	1	19.00	6.00	114782	08/02/2006	51.00	
1	1	Membership Fee	23.00	1	9.00	2.00	114958	08/02/2006	37.83	
4	1	Child Care Coupon	-1.00	1	0.00	0.00	114958	08/02/2006	37.83	
8	1	Super Cut	18.20	3	1.80	0.00	114773	08/02/2006	16.20	
10	1	Biggies Cut	19.00	1	9.00	0.00	114958	08/02/2006	37.83	
11	1	Super Curves 94-99	4.95	1	9.00	0.00	114958	08/02/2006	37.83	
28	1	Open RLJ	95.00	1	19.00	0.00	114713	08/02/2006	95.00	
28	1	Open RLJ	67.50	1	7.50	0.00	114711	08/02/2006	88.50	
35	1	Open RLJ	45.00	1	5.50	0.00	114769	08/02/2006	47.00	
35	1	Open RLJ	100.00	1	9.00	0.00	114787	08/02/2006	105.00	

Customer Totals:      445.85      12.00      34.39      2.00

**316001**      **Falber, George**

Item Number	Pack Code	Item Description	Net Amount	Net Quantity	Discount Dollars	Markdown Dollars	Trans Number	Trans Date	Sale Total	Ad
65	1	Red Hotz Pony	49.50	1	5.50	0.00	114774	08/02/2006	49.50	

Customer Totals:      49.50      1.00      5.50      0.00



**DCRS**  
**SOLUTIONS**  
 FOR RETAIL • HOSPITALITY • RESTAURANT

[www.DCRS.com](http://www.DCRS.com)

2605 METRO BOULEVARD ■ ST. LOUIS MO 63043  
 314.739.6666 ■ 800.231.0166