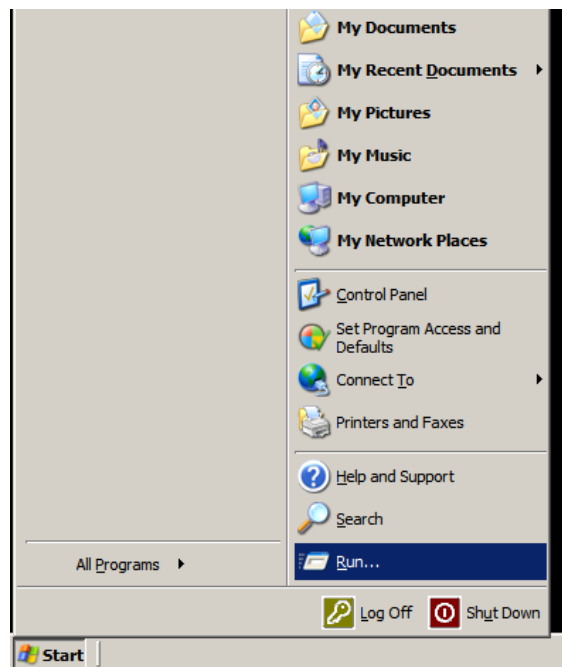
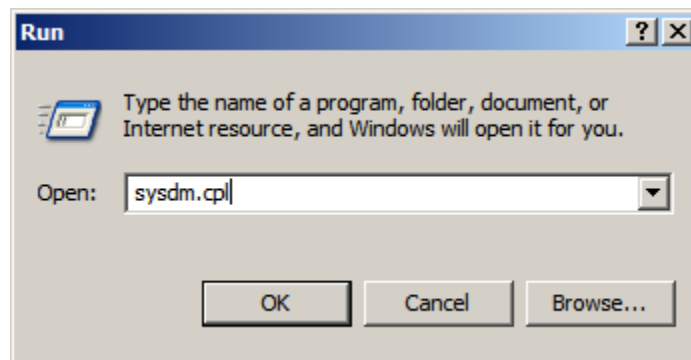


How to determine the **Service Pack** on your Windows XP Pro Operating System (*or determine what Operating System is used, if different*):

1. In the lower left portion of your desktop screen, click the **Start** button, then select **Run**



2. In the **Run** box, type: **sysdm.cpl** and click **OK**



3. In the **System Properties** window, your **Service Pack #** will now display under **System** information (or other Operating System, if not Windows XP). **As of 7/13/10, maintaining COMPLIANCE with PCI Data Security Standards now requires Microsoft Windows XP Professional Service Pack 3 (NOT 2). Windows 2000 is also NOT COMPLIANT.**

