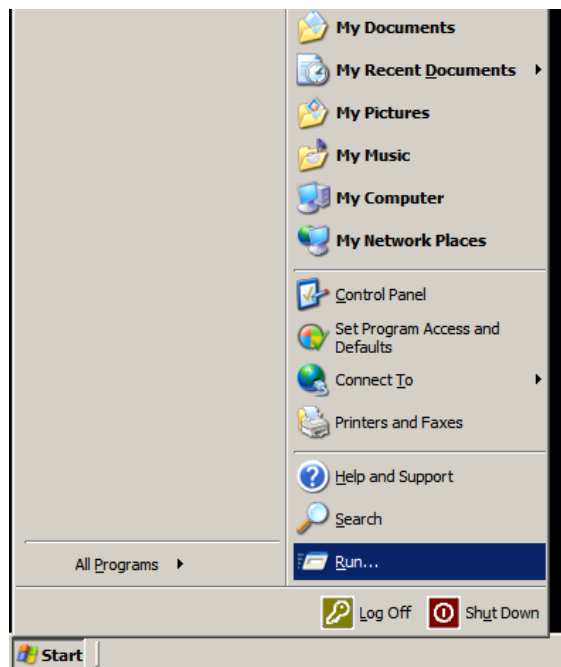
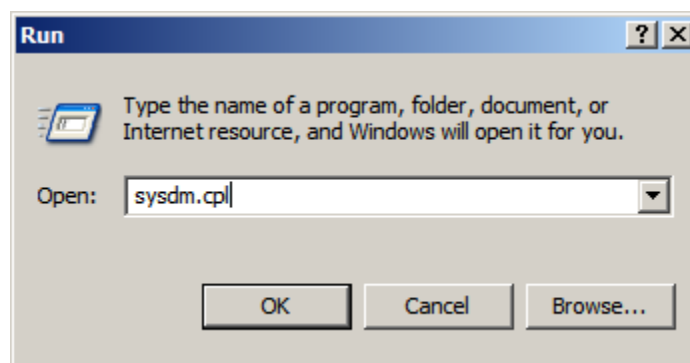


How to determine Operating System:

1. In the lower left portion of your desktop screen, click the **Start** button, then select **Run**



2. In the **Run** box, type: **sysdm.cpl** and click **OK**



3. In the **System Properties** window, your Operating System will display under System information
As of April 8, 2014, maintaining COMPLIANCE with PCI Data Security Standards requires Microsoft Windows 7 Professional (Windows XP is no longer supported)

